

Kansas City, Missouri

Shops at Stateline Station



Located at the Stateline, adjacent to Leawood Kansas, on the south side of Kansas City, Missouri, this regional trade area boasts the most affluent area in the greater Kansas City metropolitan area. This pad building is located adjacent to Bank of America on the southeast corner of State Line Road and 135th Street. The development is anchored by Super Target and is across the street and visible from the Super Wal-Mart & Lowe's. Area retailers include: Applebees, Bassett Furniture, Cost Plus, Dress Barn, Gamestop, GNC, Gordman's, Great Clips, Hallmark, Jiffy Lube, Linens N Things, Lowe's, Mattress Firm, Michaels, Payless Shoes, Petco, Pier 1, Shoe Carnival, Subway, Super Target, Super Wal-Mart and Wendy's.

Demographics

Item/Radius	1 mile	3 miles	5 miles
Population	3,875	41,757	131,922
Average Household Income	\$117,249	\$133,399	\$105,160
Employees	1,930	19,045	86,630

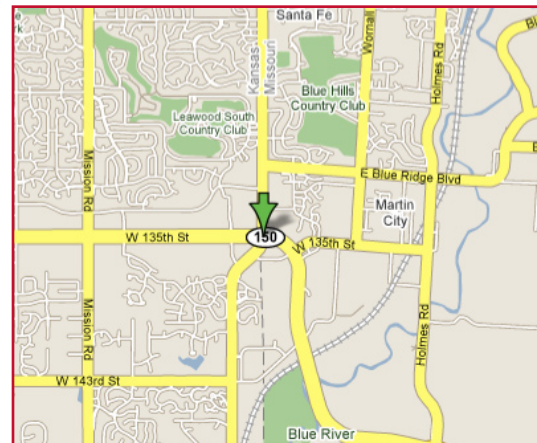
Property Details

Square Feet: 9,400

Divisible by: 1,600 square feet

Bay Depth: 88'8"

Parking: 47 Stalls (5/1,000)



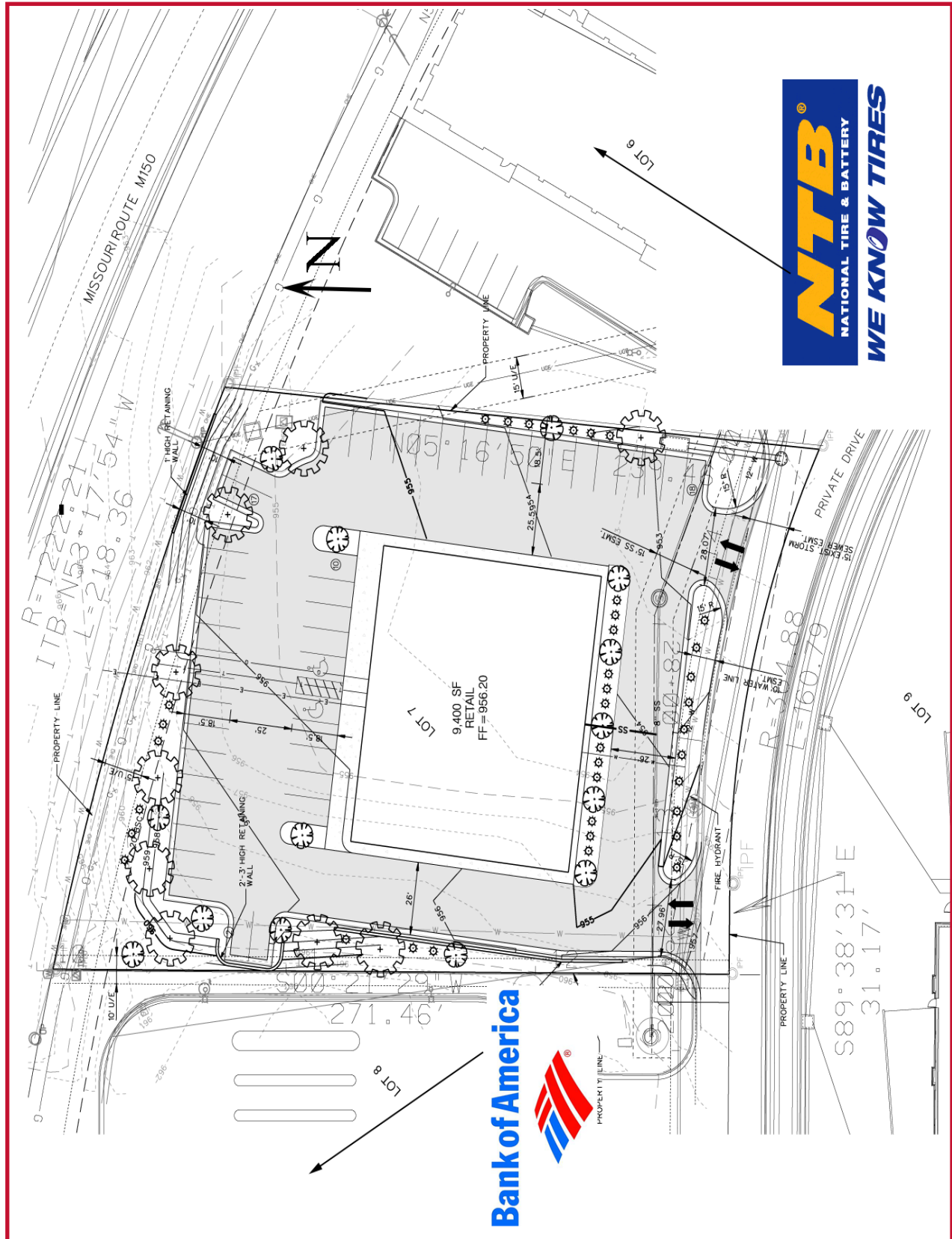
No warranty or representation, expressed or implied, is made as to the accuracy of the information contained herein and same is submitted subject to errors, omissions, changes of price, rental, or other conditions, withdrawals without notice, and to any special listing conditions imposed by our principals.

For more information:
www.transmarkcompany.com

Adam Karon
adam@transmarkcompany.com
520-615-9262

Steve Scannell
steve@transmarkcompany.com
303-771-5012

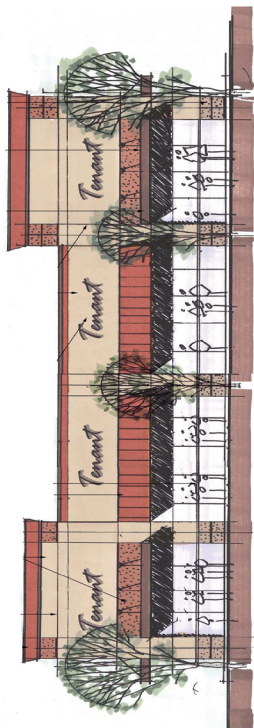






Kansas City, Missouri

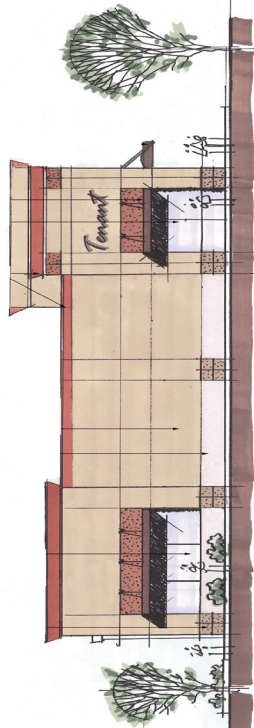
Shops at Stateline Station



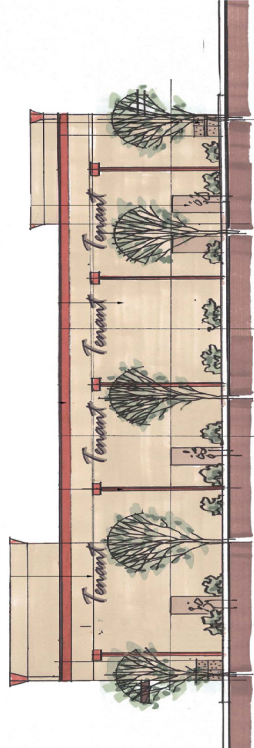
NORTH ELEVATION



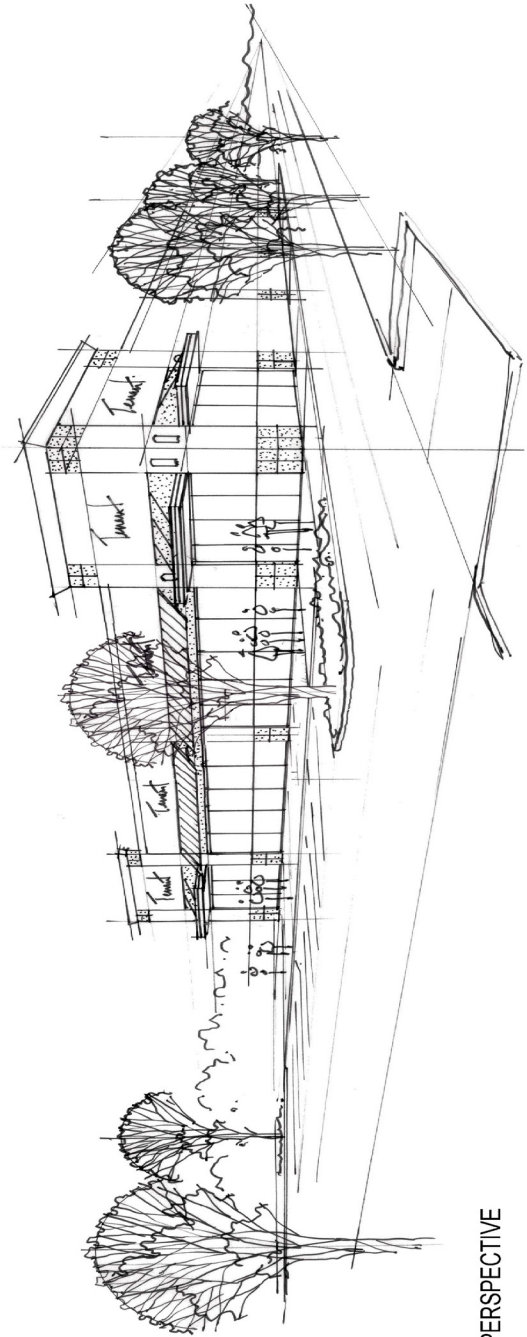
WEST ELEVATION



EAST ELEVATION



SOUTH ELEVATION



PERSPECTIVE