

Shops at Stateline Station

KANSAS CITY, MISSOURI

NOW LEASING!



LOCATED at the Stateline, adjacent to Leawood Kansas, on the south side of Kansas City, Missouri, this regional trade area boasts the most affluent area in the greater Kansas City metropolitan area.

ADJACENT to Bank of America, this pad building is located on the southeast corner of State Line Road and 135th Street. The development is anchored by Super Target, across the street and visible from Super Wal-Mart and Lowe's.

AREA RETAILERS INCLUDE: Applebees, Carl's Jr., Chipotle, Commerce Bank, Cost Plus, CVS, Dressbarn, Ford Auto Dealership, Gamestop, GNC, Gordman's, Great Clips, Hallmark, Jiffy Lube, Lowe's, Marshalls, Mattress Firm, McDonald's, Mercedes Dealership, Michaels, Payless Shoes, Petco, Pier 1, Sally Beauty Supply, Shelpers, Shoe Carnival, Starbuck's, Subway, Super Target, Valvoline, Super Wal-Mart and Wendy's.

DEMOGRAPHICS

RADIUS	1 MILE	3 MILES	5 MILES
Population	5,012	44,696	145,509
Avg. H.H. Income	\$109,859	\$124,649	\$101,608
Employees	1,930	19,045	86,630

PROPERTY DETAILS

Square Feet:	9,400
Divisible by:	1,600 Square Feet
Parking:	47 Stalls (5/1,000)
Bay Depth:	88' 8"

CONTACT:

Adam Karon
adam@transmarkcompany.com
520.615.9262

Steve Scannell
steve@transmarkcompany.com
303.717.4752

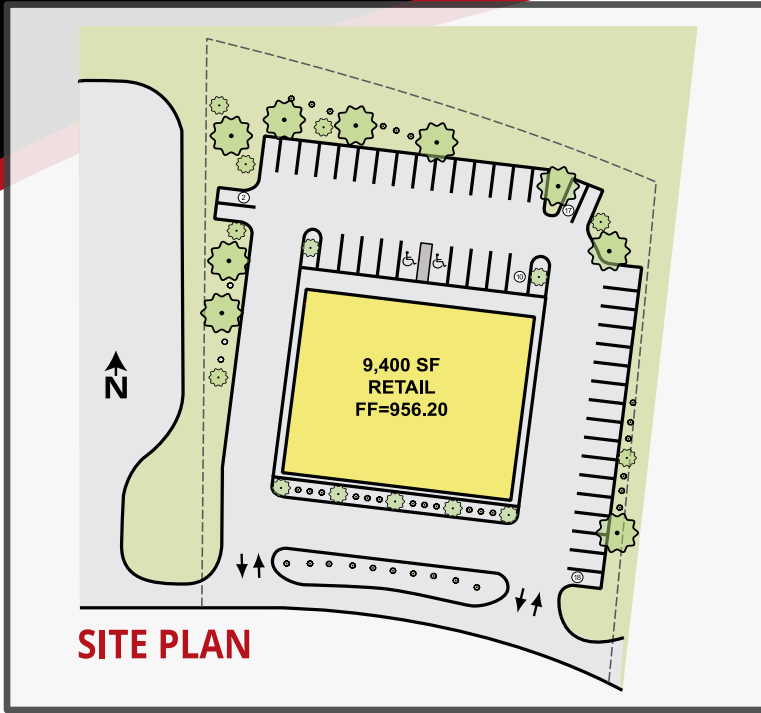
TRANSMARKCOMPANY.COM



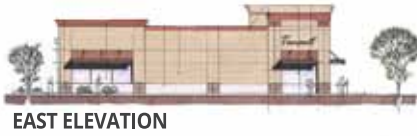
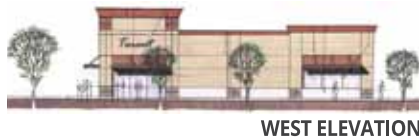
Shops at Stateline Station

KANSAS CITY, MISSOURI

NOW LEASING!



ELEVATIONS



PROPERTY LOCATION MAP



No warranty or representation, expressed or implied, is made as to the accuracy of the information contained herein and same as submitted subject to errors, omissions, changes of price, rental, or other conditions, withdrawals without notice, and to any special listings conditions imposed by our principals.

TRANSMARKCOMPANY.COM

CONTACT:

Adam Karon
adam@transmarkcompany.com
520.615.9262

Steve Scannell
steve@transmarkcompany.com
303.717.4752

