



Crown Point Center Parker, Colorado

NOW LEASING!



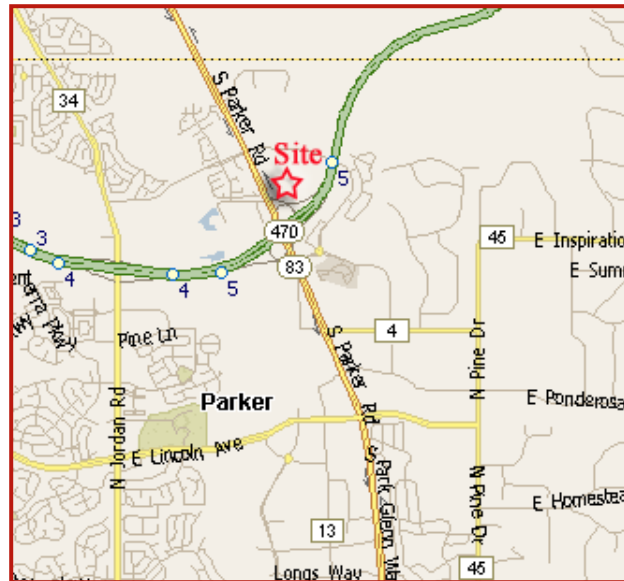
Shops at Crown Point is located at the main entrance of Costco, opened in August 2008. Costco's much anticipated entry into this rapidly growing, affluent community offers retailers and shoppers an extremely accessible location at the confluence of E-470 and Parker Road. Costco reports average store sales of \$125,000,000. Money magazine reports the average Costco shopper has an average annual income of \$72,000. Over 50 percent of the women and men in the top 10 percent income bracket shop at the chain.

Demographics

Item/Radius	1 mi.	3 mi.	5 mi.
Population	5,437	39,917	120,150
Avg. H.H. Inc.	\$94,255	\$117,038	\$114,580
Employees	910	16,257	56,958

Bay Depth: 100 feet
 Parking Ratio: 8/1,000
 Building Size: 21,721 sq. ft.
 Divisible to 1,300 sq. ft.

Parker Rd. S. of E470	59,200
Parker Rd. N. of E470	45,100 (CDOT Projects 49,520 in 2010)
E470 W. of Parker Rd.	40,000
E470 E. of Parker Rd.	30,200 (CDOT Projects 37,750 in 2010)



For More Information:
www.transmarkcompany.com

Steve Scannell
steve@transmarkcompany.com
 303-771-5012

Adam Karon
adam@transmarkcompany.com
 520-615-9262

No warranty or representation, expressed or implied, is made as to the accuracy of the information contained herein and same is submitted subject to errors, omissions, changes of price, rental, or other conditions, withdrawals without notice, and to any special listing conditions imposed by our principals.

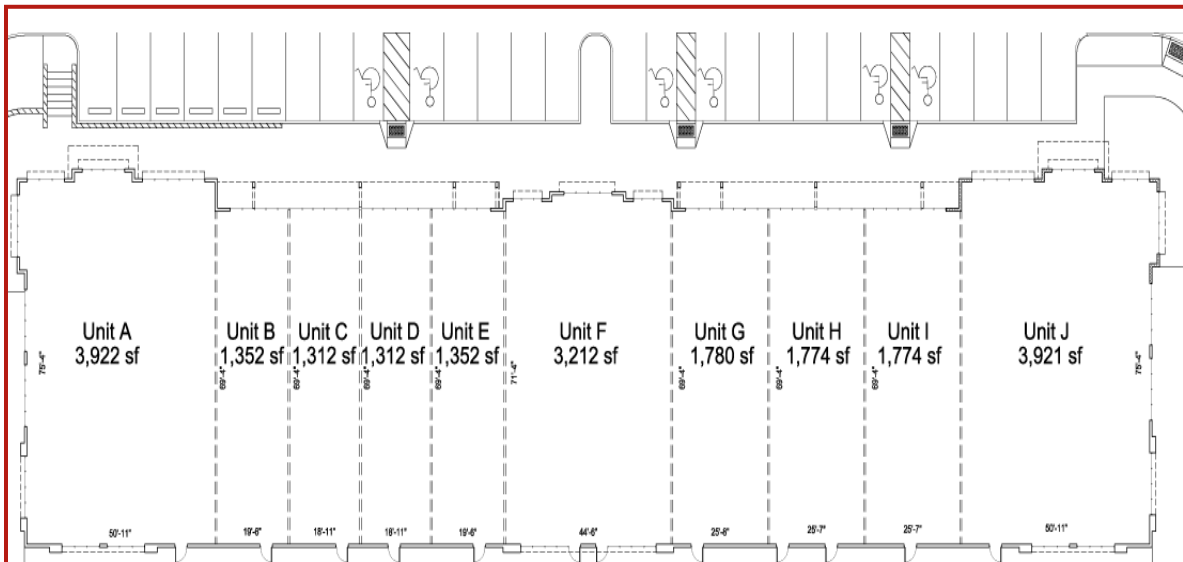
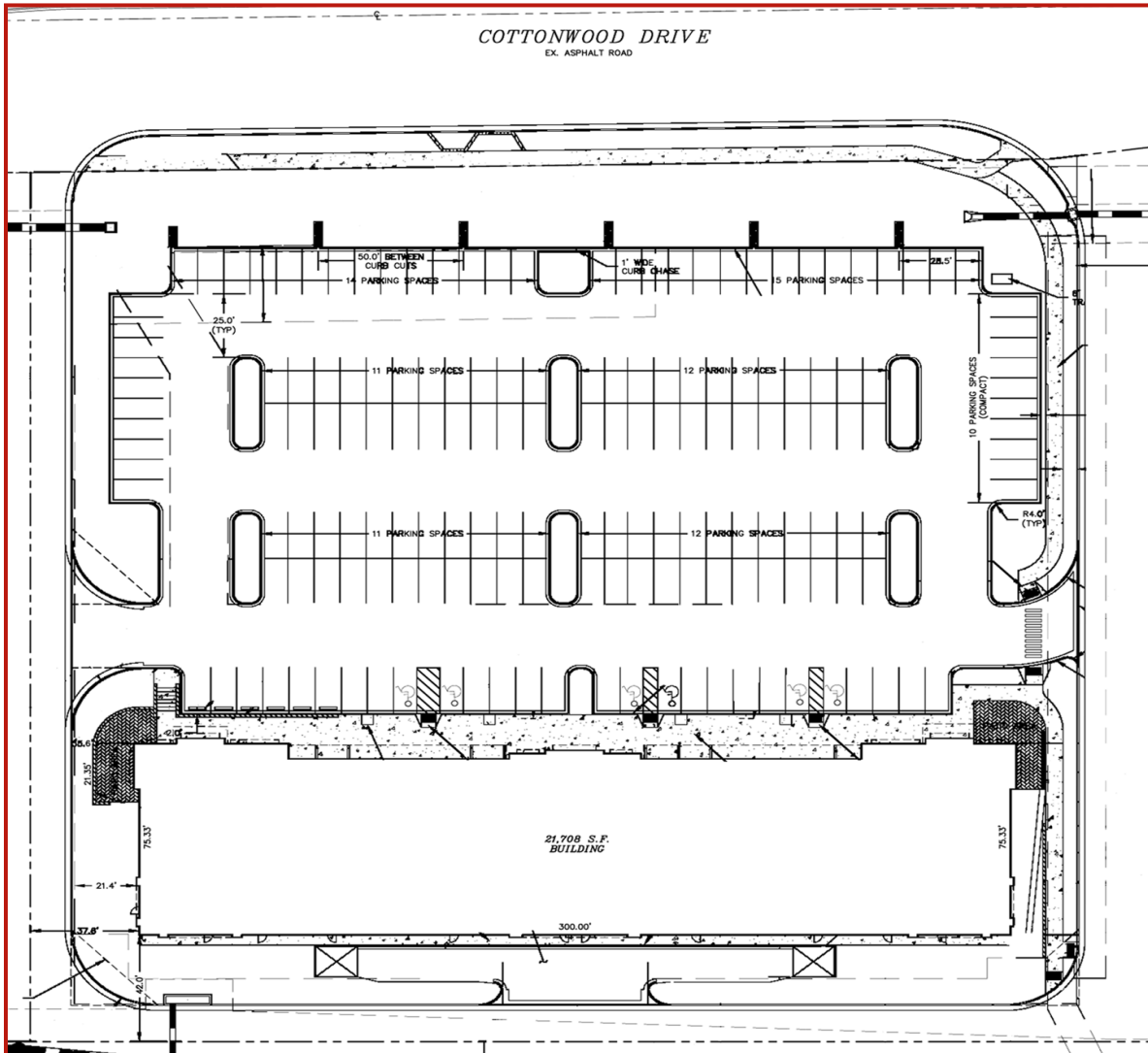


Crown Point Center Parker, Colorado





Crown Point Center Parker, Colorado



Crown Point Center Parker, Colorado



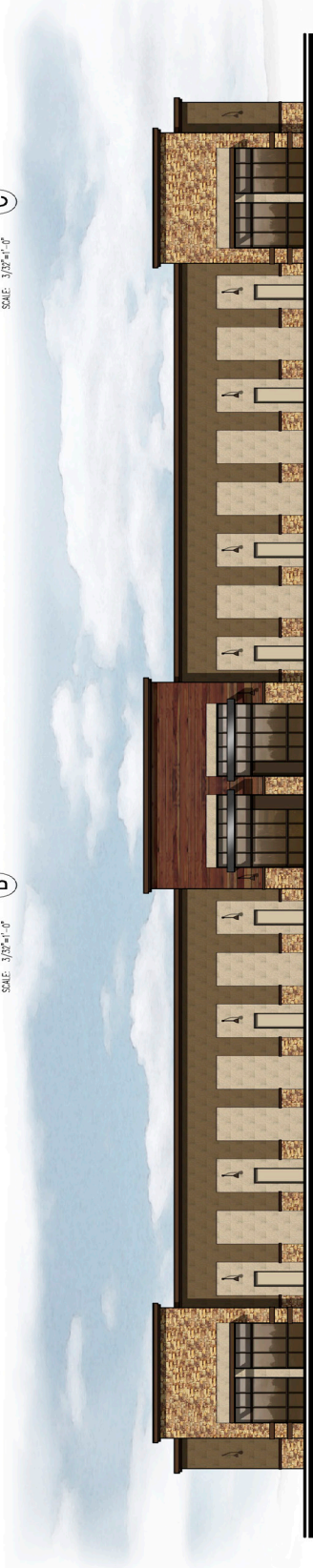
NORTH ELEVATION **A**
SCALE: 3/32"=1'-0"



EAST ELEVATION **B**
SCALE: 3/32"=1'-0"



WEST ELEVATION **C**
SCALE: 3/32"=1'-0"



SOUTH ELEVATION **D**
SCALE: 3/32"=1'-0"



Crown Point Center Parker, Colorado

